

# esade

## FACT SHEET 2023 / 2024



 ESADE Business School  
Avda. de la Torreblanca nº59  
08172 Sant Cugat – Barcelona, Spain

 Tel: +34 932 806 162

 <http://www.esade.edu>

 [bbaprogrammemgmt@esade.edu](mailto:bbaprogrammemgmt@esade.edu)

Esade holds the selected “Triple Crown” accreditation: EQUIS, AACSB and the ASSOCIATION OF MBA’s. Esade is a member of the CEMS Alliance (CEMS) and the Partnership in International Management (PIM).

In addition, Esade is a Cervantes Institute – accredited institution.

## Do Good. Do Better.

## APPLICATION

### ADMISSION REQUIREMENTS

Students must be nominated by the partner university.

Students should have completed at least one year of studies at the undergraduate level.

### NOMINATION PROCESS

To be completed by the home university Exchange coordinators. Deadlines:

**Fall term** April 30<sup>th</sup>

**Spring term** September 30<sup>th</sup>

### APPLICATION PROCESS

Documents must be provided by the student. Deadlines:

**Fall term** May 30<sup>th</sup>

**Spring term** October 15<sup>th</sup>

- ✓ Copy of Passport (or ID Card only for EU citizens)
- ✓ Proof of Health Insurance (indicating clearly the coverage for the full exchange period)
- ✓ Resume/ Curriculum Vitae
- ✓ Official Transcript from Home University
- ✓ Declarations and Commitment document

Do Good. Do Better.

## REGISTRATION

Courses can only be added/dropped during the **official registration** or **change round** (add&drop period).

No changes will be admitted once those periods are over.

Students are kindly invited to check in advance with their home universities which courses can be mapped or not.

Esade requires students to be flexible when choosing courses since slots in specific courses cannot be guaranteed to any student.

### COURSE WORKLOAD

Students from European  
universities  
**Min 27 ECTS – Max 33 ECTS**  
Students from Non-  
European universities  
**Min 23 ECTS – Max 33 ECTS**

However, if the student is allowed to take a lower amount of ECTS, we would need to receive a written approval of the Home University Exchange coordinator.

### COURSE REGISTRATION

To be completed online  
by Exchange students

**Fall Term:**

July 4<sup>th</sup> – July 7<sup>th</sup>

**Spring Term:**

Nov 14<sup>th</sup> – Nov 17<sup>th</sup>

### CHANGE ROUND (ADD&DROP PERIOD)

**Fall term:**

Aug. 28<sup>th</sup> – Aug. 30<sup>th</sup>

**Spring Term:**

Nov. 28<sup>th</sup> – Nov. 30<sup>th</sup>

## ACADEMIC CALENDAR

### FALL TERM 2023

(August 28<sup>th</sup> to December 9<sup>th</sup>)

August 28<sup>th</sup> – September 1<sup>st</sup>  
August 28<sup>th</sup> – September 1<sup>st</sup>  
September 4<sup>th</sup>  
December 9<sup>th</sup>  
December 23<sup>rd</sup> - January 7<sup>th</sup>

Orientation Program (Mandatory)  
Spanish Intensive Course (optional)  
Beginning of Fall Term 2023  
Official End of Fall Term 2023  
Christmas Break

### SPRING TERM 2024

(January 13<sup>th</sup> to May 18<sup>th</sup>)

January 13<sup>th</sup> (all day)  
January 15<sup>th</sup> – January 26<sup>th</sup>  
January 15<sup>th</sup>  
March 23<sup>rd</sup> – April 1<sup>st</sup>  
May 18<sup>th</sup>

Orientation Program (Mandatory)  
Spanish Intensive Course (optional)  
Beginning of Spring Term 2024  
Easter Break  
Official End of Spring Term 2024

## LEARNING EXPECTATIONS

### COURSE OFFER AND EXAMS

The Exchange Programme course offer will be shared with nominated students at a due time. Please refer to the syllabus of each subject, where the final assessment is clearly indicated. Exams take place during the last day of class for each course. **Attendance to class is mandatory for all courses.**

### LANGUAGE OF INSTRUCTION

Courses are taught in **English** and in **Spanish**.

Students interested in taking courses taught in Spanish are highly recommend to have a B1 level in Spanish language, according to the Common European Framework for Reference of languages (CEFR). We reserve the right to ask the official certificates as a proof of Spanish knowledge.

### GRADING SCALE

0,0 - 4,9	Failed
5,0 - 6,9	Passed
7,0 - 8,9	Distinction
9,0 - 10	Outstanding

Non numeric grades:  
NP is Non-attended

Do Good. Do Better.

## LEARNING EXPECTATIONS

### FIELDS OF STUDY

Economics, Finance and  
Accounting

People Management  
and Organization

Marketing

Society, Politics  
and Sustainability

Operations, Innovation  
and Data Science

Strategy and General  
Management

### SPANISH LANGUAGE COURSE

Esade offers a **Spanish intensive** language course for all Exchange students who want to learn or improve their Spanish. The Spanish Intensive Course takes place during the first days of the exchange, and it grants 2 ECTS.

**Spanish extensive** language course (throughout the term) is also available, and it also grants 2 ECTS. In order to enroll to the Spanish extensive course, students must enroll to the intensive course.

#### Available Spanish language levels

(depending on registered students)

Beginners

Elemental

Intermediate

Intermediate+

Advanced

A placement level test is required prior registration

Do Good. Do Better.

## EXTRA INFORMATION

### ENTRY VISA AND RESIDENCE PERMIT

EU citizens only need a Passport or national ID in order to enter Spain. Non-EU citizen will need a Student Visa. When you apply for a Student Visa (Visado de Estudiantes) you will be asked for the following documents:

- Passport (valid for at least 1 years from date of application)
- 2 Passport-size photos
- Proof of financial means
- Proof of medical/accident insurance to cover length of stay
- Letter of Acceptance from esade (includes an invitation to housing, which is accepted as proof of accommodation)
- Police clearance & medical certificate for exchange periods over 6 months.
- Other documentation, like proof of residence in consulate's jurisdiction or proof of previous studies may be also be required depending on the consulate.

Students who will be staying for a single term will be issued a short-term student visa, which will be valid for the period of their studies. Students who will be staying for two terms will obtain a long-term student visa.

The visa is valid for 90 days and allows the student to obtain the residence card (TIE) upon arrival.

Please check the **International Student Handbook** and with the nearest Spanish Embassy or Consulate in your home country for more detailed information.

## EXTRA INFORMATION

### HEALTH INSURANCE

Exchange participants must arrive with their own health insurance that covers all international incidents. More information about health insurance can be found in the [International Student Handbook](#), which is available at the exchange website and shared with students when they have been nominated to come to ESADE.

### ACCOMMODATION

Accommodation tips can also be found at the [International Student Handbook](#)

### COST OF LIVING

Approximate cost of living while coursing at esade:

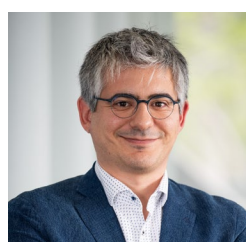
<i>Tuition Fees</i>	<i>Waived</i>
<i>Accommodation Off Campus (shared)</i>	<i>500-700€/month + utilities (100-200€)</i>
<i>Accommodation On Campus</i>	<i>800€/month</i>
<i>Transportation</i>	<i>40€/month</i>
<i>Meals&amp;Groceries</i>	<i>250-400€/month</i>
<i>Miscellaneous</i>	<i>200-500€/month</i>



## EXCHANGE PROGRAMME TEAM

### Prof. Cristina Sancha

Academic Director, BBA Programme  
cristina.sancha@esade.edu



### Mr. Simone Vincis

Director, Bachelor's Degree programs  
simone.vincis@esade.edu

### Ms. Jenny Hindson Badia

Associate Director, BBA Programme  
jenny.badia@esade.edu

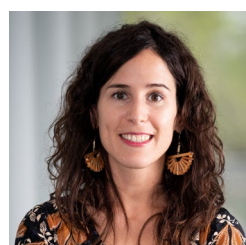


### Ms. Antònia Maria Serra

Director, International Academic Relations  
antoniam.serra@esade.edu

### Ms. Caroline Beckershaus

International Student Advisor  
isa@esade.edu

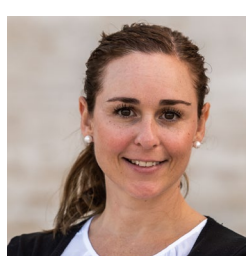


### Ms. Cristina Gómez

Exchange Operations Specialist  
cristina.gomez5@esade.edu

### Ms. Carolina Álvarez

Exchange Coordinator – USA  
carolinaandrea.alvarez@esade.edu



### Ms. Jimena Mesto

Exchange Coordinator – USA  
jimena.mesto@esade.edu

### Ms. Sara Prendes

Exchange Coordinator – Asia  
sara.prendes@esade.edu



### Ms. Laia Nieva

Exchange Coordinator – Europe (outgoings)  
laiaeugenia.nieva@esade.edu

### Mr. Francesc Blanco

Exchange Coordinator – Canada, Europe (incomings), LATAM & Oceania  
francesc.blanco@esade.edu



### Ms. Laura Noëlle

Project Manager  
laura.noelle@esade.edu